

NOXION®



Installation Manual

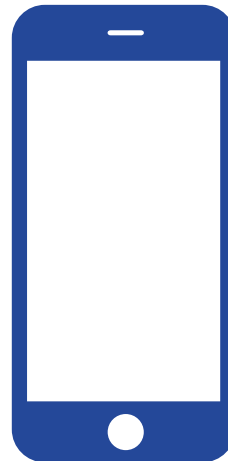
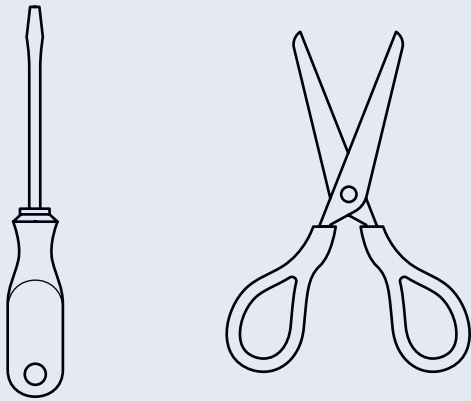
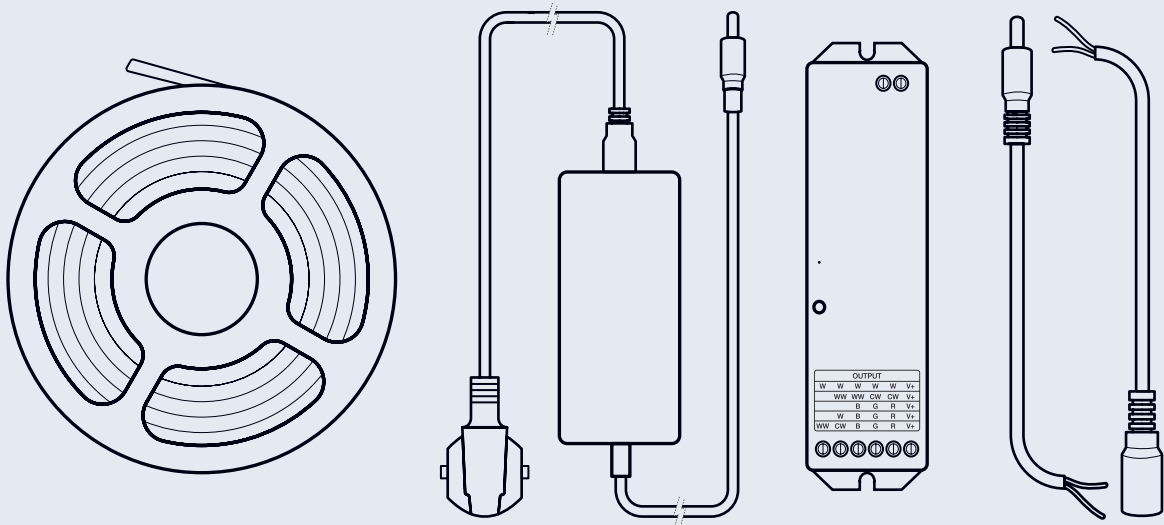
Compatible with these Noxion Naga Wifi sets (EAN)

8719157055765, 8719157055772, 8719157055789, 8719157055796,
8719157055802, 8719157055819, 8719157055826, 8719157055833

 amazon alexa

 Google Home

This manual provides step-by-step instructions for the installation and connection of your LED-strip. Follow the steps carefully to ensure a correct and safe installation.



IP Rating and Installation Environment

Ensure that the IP rating of the LED strip is suitable for the environment in which you plan to install it. For example, use IP20-rated strips in dry indoor areas and IP65-rated strips in damp environments. An incorrect IP rating can lead to damage or hazardous situations.

Working with Electricity

Always turn off the power before beginning the installation to prevent the risk of electric shock. Use insulated tools and follow applicable safety guidelines when working with electrical components.

Inspect Components for Damage

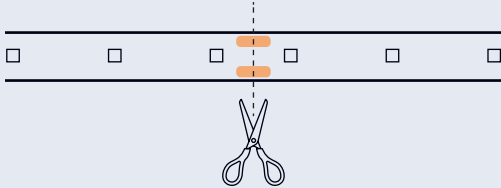
Examine all parts, such as the LED strip, power adapter, and connecting cables, for any damage before starting the installation. Damaged components can lead to malfunctions or safety risks. By observing these precautions, you ensure a safe and durable installation of your LED strips.

1 Unroll the LED Strip



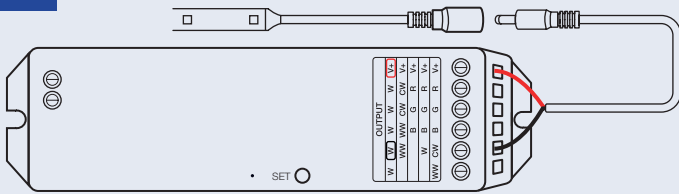
Unroll the LED strip completely to prevent heat buildup.

2 Cutting the LED Strip to Size (OPTIONAL)



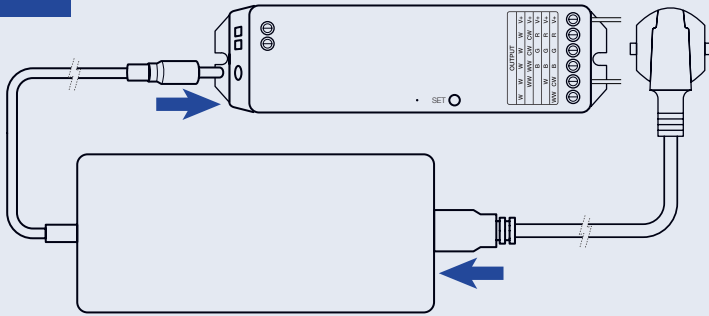
You can cut the LED strip to your desired length. Only cut along the designated cut lines to avoid damage. Work carefully to maintain the functionality of the LED strip.

3 Connecting the Controller



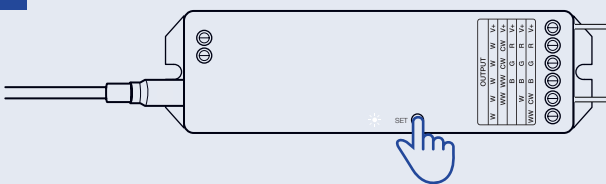
Connect the black wire of the connecting cable to the port labeled "W" and the red wire to the port labeled "V+". Use a flat-head screwdriver for this. Then, connect the other end of the connecting cable to the LED strip.

4 Connecting the Power Adapter



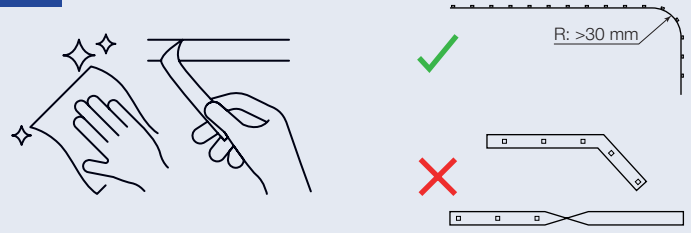
Connect the power adapter to the controller. Then, plug the power cable into the power adapter.

5 Testing the Connection



Ensure the power cable is connected to a working power outlet. Then, press the **SET** button on the controller to activate until the status light turns white. The LED strip should now light up.

6 Mounting the LED Strip



Prepare the surface where you will mount the LED strip. Ensure the surface is smooth, non-porous, and free from dust and grease. Use the 3M adhesive strip on the underside of the LED strip to mount it to the surface.

Smartphone APP Control Instruction (5G Router not supported)

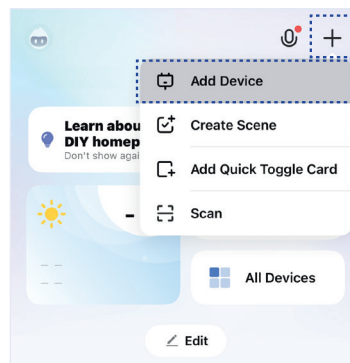
1 Download and Install Tuya Smart App

Search for **Tuya Smart** in the Apple or Google store or scan the following QR code to download and install the app. Please open the app and click the **Register** button if this is your first time using the app. Log in directly if you already have an account.

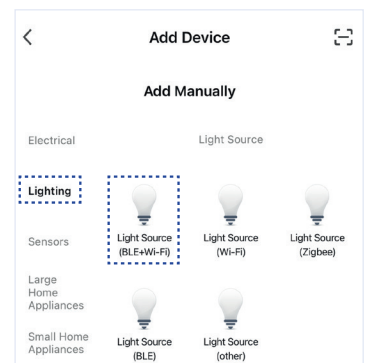


2 Network Configuration

1. Ensure the controller is connected to a working power outlet.
2. Confirm the indicator light on your controller is flashing. In case the indicator light is not flashing, long press the **SET** button on the controller until the indicator light is flashing.
3. Ensure your smartphone is connected with a WiFi network in 2.4Ghz frequency.



4. Open the app and go to the home-page. Click the **+** button in the upper right corner and then click **Add Device**.

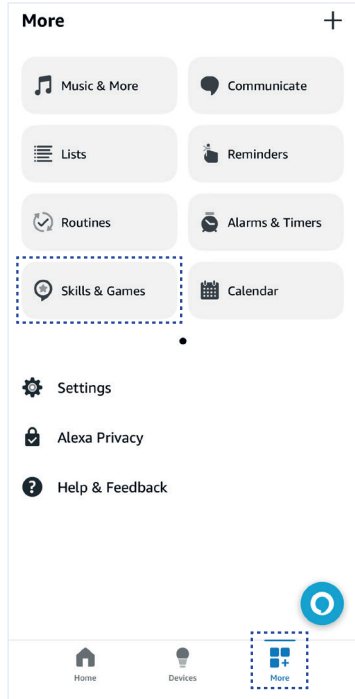


5. Click **Lighting** on the left side of the page and then click **Light Source (BLE+Wi-Fi)**. Follow the app prompts to complete the configuration.

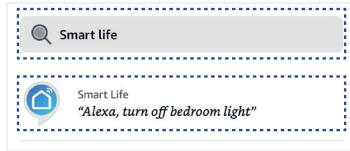
3 Optional: Alexa & Google Home

Alexa Voice Control Instruction

Ensure the device is added into the Tuya Smart app (check the Smartphone App Control Instructions). Then follow the steps below.



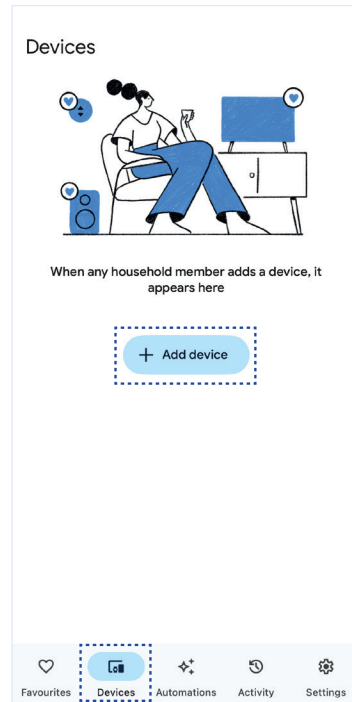
1. Open the Alexa App.
2. Click **More** on the bottom right corner.
3. Click **Skills & Games**



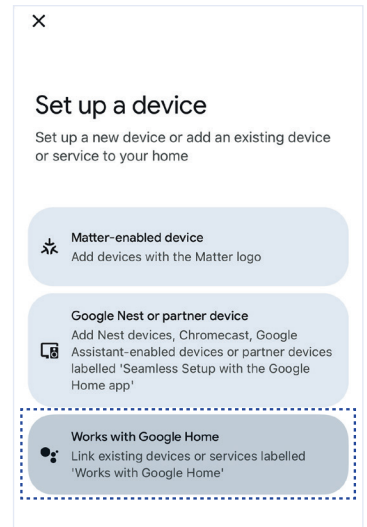
4. Click **Q** on the top left corner.
5. Typ in "Smart life" and search.
6. Select "Smart Life" and follow the instructions to finish configuration and start voice control.

Google Home Voice Control Instruction

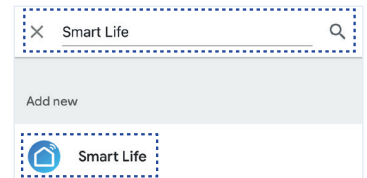
Ensure the device is added into the Tuya Smart app (check the Smartphone App Control Instructions). Then follow the steps below.



1. Open the Google Home App.
2. Click on **Devices** on the bottom of the page and then click on **+ Add device**.



3. Click **Works with Google Home**.



4. Click **Q** on the top right corner.
5. Typ in "Smart life" and search.
6. Select "Smart Life" and follow the instructions to finish configuration and start voice control.

Storage and Maintenance

Store the LED strip in a dry environment at temperatures between 0 and 30°C. Ensure that the LED strip remains free from dust. Maintain the LED strip by regularly wiping it with a dry, soft cloth. Do not use damp cleaning agents.

Disposal

The LED strip should not be disposed of with household waste. For responsible disposal, the LED strip should be taken to a collection point for electronic equipment.